

Casey at the Bat

Poem with musical snippets

arr. B Kirchner

1. *"...little hope of Casey getting to the bat,"*

Largo
JOHNNY

p

2. *"... Jimmy safe at second, and Flynn a'huggin' third"*

Presto
JUMPING GALOP

f

3. *"... mighty Casey, was advancing to the bat"*

FANFARE

4. *"...the band is playing, somewhere..."*

Andante
OLD KENTUCKY HOME

p

Casey at the Bat

Poem with musical snippets

arr. B Kirchner

1. "...little hope of Casey getting to the bat,"

Largo

JOHNNY

p

2. "... Jimmy safe at second, and Flynn a'huggin' third"

Presto

JUMPING GALOP

f

3. "... mighty Casey, was advancing to the bat"

FANFARE

f

4. "...the band is playing, somewhere..."

Andante

OLD KENTUCKY HOME

p

Casey at the Bat

Poem with musical snippets

arr. B Kirchner

1. *"...little hope of Casey getting to the bat,"*

Largo
JOHNNY

p

2. *"... Jimmy safe at second, and Flynn a'huggin' third"*

Presto
JUMPING GALOP

p

3. *"... mighty Casey, was advancing to the bat"*

FANFARE

p

4. *"...the band is playing, somewhere..."*

Andante
OLD KENTUCKY HOME

p

Casey at the Bat

Poem with musical snippets

arr. B Kirchner

1. *"...little hope of Casey getting to the bat,"*

Largo
JOHNNY

p

2. *"... Jimmy safe at second, and Flynn a'huggin' third"*

Presto
JUMPING GALOP

f

3. *"... mighty Casey, was advancing to the bat"*

FANFARE

21

4. *"...the band is playing, somewhere..."*

Andante
OLD KENTUCKY HOME

p

Bb Tenor 1

Casey at the Bat

Poem with musical snippets

arr. B Kirchner

1. *"...little hope of Casey getting to the bat,"*

Largo
JOHNNY

Casey at the Bat

Poem with musical snippets

arr. B Kirchner

1. *"...little hope of Casey getting to the bat,"*

Largo
JOHNNY

p

2. *"... Jimmy safe at second, and Flynn a'huggin' third"*

Presto
JUMPING GALOP

f

3. *"... mighty Casey, was advancing to the bat"*

FANFARE

f

4. *"...the band is playing, somewhere..."*

Andante
OLD KENTUCKY HOME

p

Casey at the Bat

Poem with musical snippets

arr. B Kirchner

1. *"...little hope of Casey getting to the bat,"*

Largo
JOHNNY



p

2. *"... Jimmy safe at second, and Flynn a'huggin' third"*

Presto
JUMPING GALOP

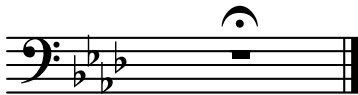


f



3. *"... mighty Casey, was advancing to the bat"*

FANFARE



4. *"...the band is playing, somewhere..."*

Andante
OLD KENTUCKY HOME



p



Casey at the Bat

Poem with musical snippets

arr. B Kirchner

1. "...little hope of Casey getting to the bat,"

Largo
JOHNNY

p *ff*

2. "... Jimmy safe at second, and Flynn a'huggin' third"

Presto
JUMPING GALOP

(ad lib., BD & Cym.)

3. "... mighty Casey, was advancing to the bat"

FANFARE

4. "...the band is playing, somewhere..."

Andante
OLD KENTUCKY HOME

p

Casey at the Bat

Poem with musical snippets

arr. B. Kirchner

1. "...little hope of Casey getting to the bat,"

Largo

JOHNNY

Musical score for the first section, "Johnny". The score is in 6/8 time and features the following parts: E♭ Soprano, B♭ Soprano 1, B♭ Soprano 2, E♭ Alto 1, E♭ Alto 2, B♭ Tenor 1, B♭ Tenor 2, B♭ Baritone, E♭ Bass, Snare Drum, and Bass Drum. The tempo is Largo. The key signature has two flats (B♭ major or D♭ minor). The score includes dynamic markings such as *p* and *ff*. The vocal parts have lyrics: "JOHNNY".

2. "... Jimmy safe at second, and Flynn a'huggin' third"

Presto

JUMPING GALOP

Musical score for the second section, "Jumping Galop". The score is in 2/4 time and features the following parts: E♭ Sop., B♭ Sop. 1, B♭ Sop. 2, A 1, A 2, T 1, T 2, B♭ Bar., and E♭ Bass. The tempo is Presto. The key signature has two flats (B♭ major or D♭ minor). The score includes dynamic markings such as *p* and *ff*. The vocal parts have lyrics: "Jimmy safe at second, and Flynn a'huggin' third".

(perc. does play)

14

Eb Sop.
 B \flat Sop. 1
 B \flat Sop. 2
 A 1
 A 2
 T 1
 T 2
 B \flat Bar.
 Eb Bass

3. "... mighty Casey, was advancing to the bat"

FANFARE
 (Solo Eb Sop.)

original composition by
 B. Kirchner

22
 Eb Sop.

(oh Casey, mighty Casey, he's so pompous, inept,. and an arrogant haughty old Son of a Bitch! Mighty Casey!)

4. "...the band is playing, somewhere..."

Andante
 OLD KENTUCKY HOME

33

Eb Sop.
 B \flat Sop. 1
 B \flat Sop. 2
 A 1
 A 2
 T 1
 T 2
 B \flat Bar.
 Eb Bass
 Tr/Cym
 SD/BD

Fine

Casey at the Bat